

THE FRIDAY FLIER

(Published fortnightly)

KOTAHITANGA

Waikato Waldorf School, Kindergartens and Play Circle



No: 17

3 November 2023

Kia ora e te whaanau, hello everyone,

I hope this finds you all well.

We are already almost halfway through the term, and it really is a hive of activity.

Class Seven returned from an exhilarating Outdoor Skills camp last week, and as I write this Class Six is in Rotorua on their Geothermal Adventure Camp in Rotorua. Class Two is practising for an upcoming class play, and Class Eight is about to round off a very successful 'Waru Market' fundraising week, selling goods that they have made here at school to raise funds for upcoming camps. Well done too all the students, teachers, support staff, parents and the wider community for supporting our mahi in providing engaging and rich learning experiences for our students. Ka pai too mahi!

Things will get a little busier in a few weeks' time, with the arrival of our new Class One and Two buildings. These brand-new classrooms will be situated in the area near the fort, transforming the look of our school whilst providing much-needed space to allow us to continue to expand and meet the needs of our ever-growing community. Sue provides more details about this later on in the flier.

Finally today, you will all now be aware that Jane Keir has been recruited to be the next Principal of Waikato Waldorf School. Jane and I have started to work together to hand over the reins, and will continue to do so in the coming weeks. Jane will officially begin in her new role at the start of the 2024 school year. I know that Jane is terrifically excited to meet you all and I have no doubt that the school is in excellent hands going forward!

Thanks everyone, have a great weekend.

Noho ora mai,

Rob

Whakataukii o te wiki

Tē tōia, tē haumatia

***Nothing can be achieved without a plan,
workforce and a way of doing things***

UPCOMING EVENTS TERM 4

10 November	Class 4 Maungatautari Trip
15 -17 November	Class 8 Camp
20 November	School Closed - Teacher Only Day
27 Nov - 1 Dec	Class 5 Olympic Camp
3 December	Advent Fair Community Event (Sunday)
15 December	Last day of term - 2pm finish

A warm welcome to Waikato Waldorf School to

James Nelley Class 8
Nota Rodriguez-Lonebear Class 1

WANTED

Can anyone help with **wood chip**, suitable for garden mulch and playground soft fall areas. As a school we get through quite a lot!

Please call Chris (Caretaker) on 021 0806 0775.

Term 4 started with a mix of excitement, adventure and nervousness for Class Seven as they prepared for their much-anticipated Outdoor Skills Camp.

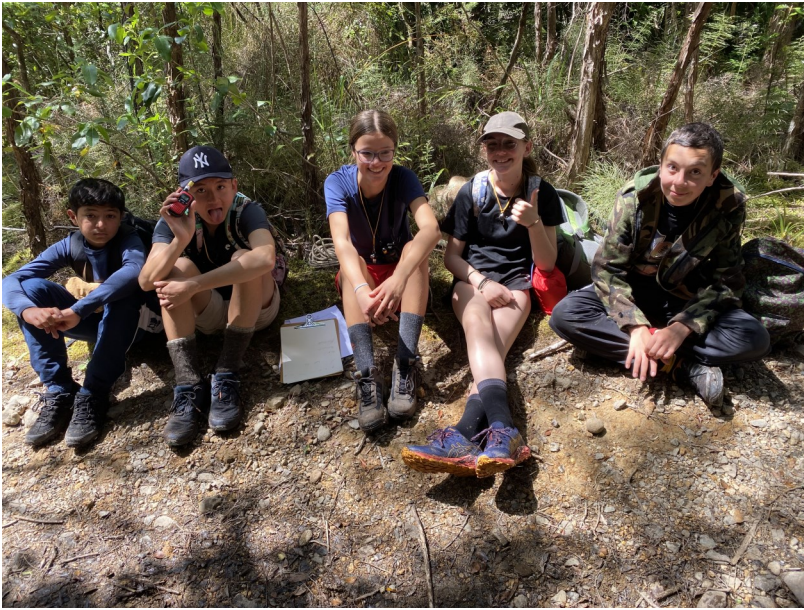
During an overnight camp at school in Week 1, the students learnt valuable outdoor skills, bush craft, and first aid training in preparation.

In Week 2, Class 7 embarked on their five-day Outdoor Skills Camp. Surrounded by the beauty of nature, they put their learning into practice, including building their own bivvies, and preparing and cooking their own dinners. From navigating forest trails to stargazing under the clear night skies, our students embraced the challenges and wonders of the natural world. They showed teamwork, leadership, and mental and physical resilience as they completed the various daily challenges set for them. Each student proved themselves more capable than they had imagined, and emerged from the experience with more confidence, and a deeper appreciation for their peers, the environment, and their home comforts.

We're grateful to the dedicated adults and enthusiastic students who made this camp such an enriching experience, and allowed for this wonderful week filled with laughter, personal growth, and unforgettable memories, to take place.

Jo Buer





Waikato Waldorf High School

...the adolescent journey



HIGH SCHOOL HAPPENINGS



Preparation for the Class 9's science fair. Students have researched and presented information on a topic of their choice.

Boards are open for viewing for Class 5 and up, on Monday.

Topics chosen were: Fireworks, Fossils, Air Pressure Projectile, Astronomy and Salt Tolerance in Succulents.

Class 8's Main Lesson of Geography had them learning about New Zealand/Aotearoa and World regions through the game of Risk.

Currently they are building their own bilingual NZ version.



This week, despite poor weather predictions the Annual Waru Market (organised and run by Class 8 students) was held after school. Festive music and lines of punters made for a wonderful occasion.

All proceeds go towards the Class 8 Journey Camp.

Products on sale were: A variety of Nerikomi pottery, Handmade Soap, wooden crafts, fabrics items such as, aprons, headbands and wallets.

Also Class 8 have fabric wraps for sale. More of these fantastic items will be available for purchase over the next 4 weeks.



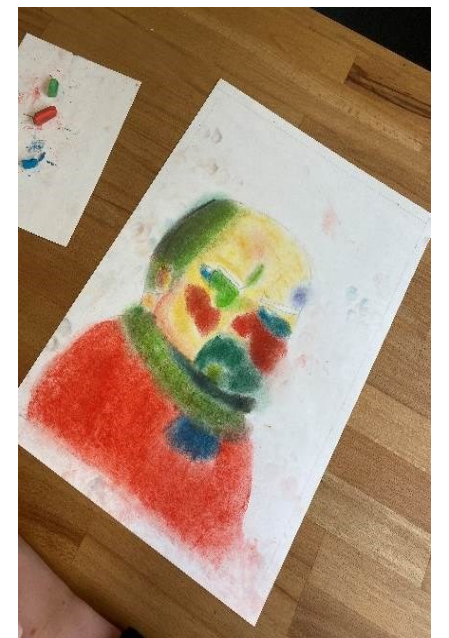
Class 8 - Head Study

In visual art, students are drawing the human head. The first task was to make a portrait using the rules of proportion and develop confidence with drawing facial features like the eyes, nose, mouth and ears. The second task was to choose a portrait painting from the flamboyant work of the expressionist period and copy it using pastels. In this exercise, they not only just learn to replicate, but also enlarge the work. They develop an appreciation for the most relevant elements in this art form: line, form, value and colour. Their final assignment will be to do a self-portrait.

The finished artworks are on display in the office foyer.

Feel free to pop in for look.

Jody





PROPERTY UPDATE FROM THE PROPRIETORS TRUST

November 2023

Kia ora koutou

Whilst we are busy counting down to the end of the year and looking forward to our summer break the building project for our two new classrooms is ramping up. The rooms are being built off site at Builtsmart in Huntly and are due to be completed in a few weeks' time. At the moment we are expecting them to be delivered on the 23rd and 24th of November all being well. They should be arriving early in the morning causing the least disruption to the school as possible, but Rob will be informing you of any alternative arrangements for drop off if required nearer the time.

You will see a few changes to the current landscape in the forthcoming weeks as we prepare for the buildings. We



3D PERSPECTIVE

have been really conscious of trying to protect as many of our loved trees as possible but inevitably it has been necessary to remove a few. Sadly, the large tree on the mound at the front of the school needs to come down in order for the buildings to be brought on to site. This tree is much loved by our children particularly when waiting to go home but it has a limited life span and would have had to come down anyway within the foreseeable future. A few smaller

trees on the corner of the path leading to class 3 – 7 and the old flying fox poll will need to be removed as the corner of the new building will occupy this space. But I am really pleased to inform you that we have managed to keep all our other trees intact. Our arborist should be coming at the end of week 5 to do the necessary work.

The week before the new buildings land we will be erecting safety fencing and leveling the work site. The whole existing play area where the fort and eco hut are at present will be out of bounds for the last few weeks of term.

Prior to that we will be starting to take down and removing some of our existing play equipment. We will be repositioning the fort, climbing frame and monkey bars into new locations for the children but will need to remove some of the out-of-date equipment. We will also be removing the eco hut in order to open up that back area. We are in the process of drawing up a new landscape plan for what will be the area behind the new classrooms which will be developed with our youngest children in mind incorporating some of the old play equipment and developing beautiful wildlife areas. Our special character and the natural environment is at the forefront of our minds. As soon as the plans are complete, we will share them with you. We are still aiming to install our large playground for the older students at the end of the field some time next year.



As you know when building something new things have to look worse before they get better so thank you for your patience as we work through this important process. The outcome will be worth the wait, and we look forward to seeing our new classrooms open for classes 1 and 2 at the beginning of the next academic year.

Barratt School of Music

Music Lessons 2024

Are you keen to learn a wind or brass instrument?

Barratt School of Music is taking expressions of interest for music lessons in 2024. Lessons are available in either group or individual formats on these instruments:

Flute	Oboe
Clarinet	Saxophone
Trumpet	Music Theory

These instruments are very popular and can open many opportunities to enjoy music in school and in the wider community.

Lessons are open to all students in classes 4 – 11. Lessons run for 30 minutes and are scheduled during and after school time.

Tuition rates are as follows:

Group lessons: \$15 per lesson
Individual lessons: \$30 per lesson
Students will require a tutor book for their instrument (available from the tutor).

Students will need to supply their own instrument. Instruments may be hired from either Shearers Music Works, KBB Music or ABI Music (Auckland).

Students are expected to practice regularly. This will help them to make faster progress and get the most out of their lessons.

Lessons will use games and a wide variety of songs from different genres to develop good instrument technique and build musical appreciation.

For more information or to enrol please feel free email me for barrattschoolofmusic@gmail.com

Clothing Swap Tuesday 14 Nov 2.30pm -4pm

In front of the school office

No charge

Take what you need.

Children are welcome to
shop too.

Donations of good condition,
clean clothes and shoes for the
whole family are appreciated.
Please drop to the school
office by 12/11/23

Questions? Ask Jo. 021 774 110

COMMUNITY NOTICES

These notices are published as a service to the school community. Publication is at the discretion of the Editor, and does not necessarily reflect the opinion of the Faculty.



4TH NOV

FARM OPEN DAY

9.30AM START
66 TE MANATU DR, HUNTINGTON

Earth Stewards

9.30AM - 12PM:
BUTTERNUT PLANTING

12PM - 1PM:
LUNCH

1PM - 3PM:
SUMMER SEEDLING SALE

Earth Stewards



December 9th Concert tickets available now!

Tickets to our final concert of the 2023 Season are now available to purchase [online](#), or email secretary@hamiltoncivicchoir.org.nz

Hamilton Civic Choir – New Horizons – Saturday December 9th at 7:30 pm
St Peter's Cathedral, Hamilton

Join us for an evening celebrating the Christmas festive season, at our upcoming concert on December 9th at 7:30 pm at St Peter's Cathedral, Victoria St. Hamilton.

The Hamilton Civic Choir will present Christmas music from the 16th to the 21st century in their final concert for the 2023 season. The concert begins with Bach's electrifying "Shout for Joy", Jauchzet, frohlocket. This is the opening chorus from Bach's Christmas Oratorio, which has been performed by choirs throughout the ~300 years since first the first performance in 1734. The piece welcomes the Christmas season with great joy.

The concert will feature the NZ premiere of "Snow Angel" by Canadian, Sarah Quartel. Rapidly becoming a favourite among choirs internationally, Quartel asks the listener "to see the tremendous potential present in our children. The piece celebrates love, beauty and the strength that a child's voice can bring to our troubled world." Accompanied by piano, djembe (African drum) and a haunting cello line, this five-movement choral work includes narration in which three angels present their perspectives on their earthly charges.

Additional choral music includes arrangements of traditional Christmas carols, including Chilcott's arrangement of "Jingle Bells" and the Rutter arrangement for female voices, "Tomorrow shall be my dancing day".

And it wouldn't be Christmas without Christmas cake, a Christmas-themed raffle, (tickets from choir members or bring some extra cash on the day) Christmas mince pies and more carols! The audience will be offered Christmas-themed refreshments at the interval, and the opportunity to participate in several carols throughout the evening.

Ticket Prices

- Adult \$35
- Concession (Senior/Student) \$25
- Student rush/ School Child \$10
- Family (2 adults/2 children) \$80

Tickets available through tickets.co.nz or email secretary@hamiltoncivicchoir.org.nz

Door sales cash/bank deposit- subject to availability.